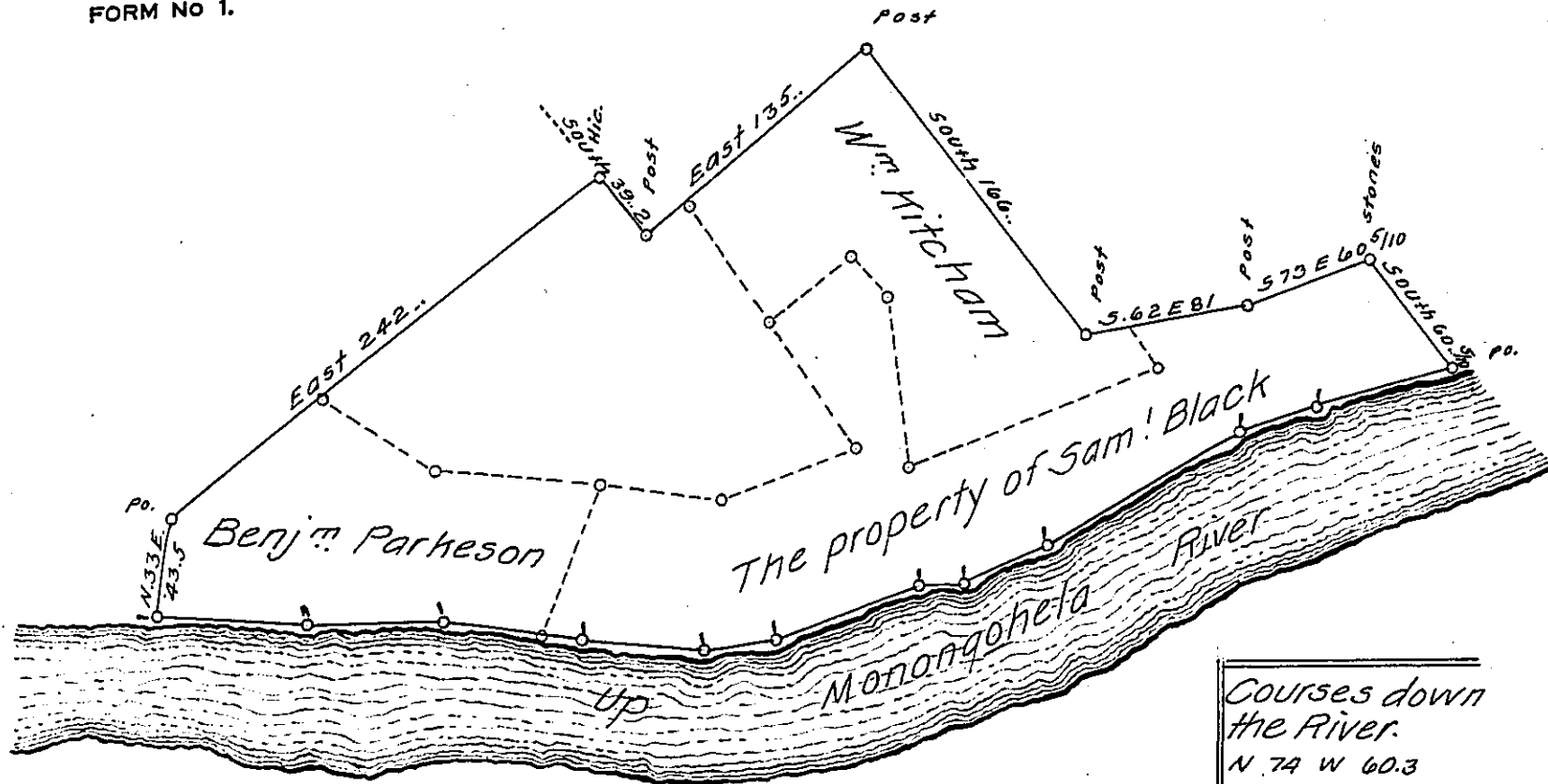


FORM NO 1.



Pursuant to the instructions of the Board of property of the State of Penn<sup>a</sup> dated the first Day of Nov<sup>r</sup> 1827 & the authority therein. I attended to the duties mentioned & respectfully report the following Notes &c. as the result of my Investigations had upon the premises

Note. The above Tract Situate in Elizabeth Township Allegheny County. was Survey<sup>d</sup> upon Order N<sup>o</sup> 875. in the Name of Samuel Perry. and which agrees with a Survey made for David Williams. being the first Tract Called for Above Kelly's Bottom. on Improvement. Executed up on a Warr<sup>t</sup> dated Feb<sup>r</sup> 28<sup>th</sup> 1787 & sold by said Williams in Allotments as appears on the draft. W<sup>m</sup> Hitcham's Lot was Survey<sup>d</sup> to him the 13<sup>th</sup> of May 1785.

To Gabriel Heister Esq<sup>r</sup>.  
S. Gen<sup>l</sup> of Penn<sup>a</sup>.

Rob<sup>t</sup>. Beatty -  
Dec<sup>r</sup> 16<sup>th</sup> 1828.

IN TESTIMONY that the above is a copy of the original remaining on file in the Department of Internal Affairs of Pennsylvania, made conformably to an Act of Assembly approved the 16th day of February, 1833, I have hereunto set my Hand and caused the Seal of said Department to be affixed at Harrisburg, this seventeenth day of November 1908.

*Henry Howard*  
Secretary of Internal Affairs.